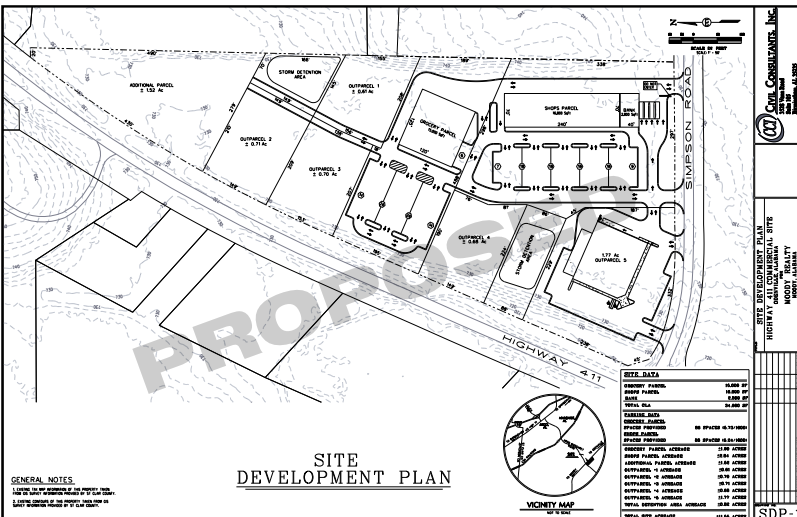


ODENVILLE, ALABAMA

US HWY 411 & SIMPSON ROAD—ODENVILLE, ALABAMA



Commercial development area located minutes from I-20, on busy U.S. Hwy. 411. Strip center planned. Outparcels are available. This is an ideal location for retail development or business center, situated between Moody & Odenville. The trade area for this location is tremendous. Located at a key intersection of growth. Utilities are available, including sewer, water & gas. High traffic area with great visibility. Red light just installed at this intersection due to high traffic.



Traffic Counts

State DOT website..... **10,780** (verified 2006)
 Independent Study ... **12,193** (performed 2/2007)

New Home Subdivisions Since 2003:..... **65**
 (Includes Moody, Margaret, Odenville, Springville, and Argo)

Estimate of Total Buildout homes in Current Subdivisions:..... **14,375**
 (per St. Clair Economic Development Council)

Outparcel Pricing: **Negotiable depending on size & location**

PRELEASING FOR RETAIL SHOPPING CENTER



www.LovejoyRealty.com
 (800) 699-5816

BRIAN CAMP
 (205) 819-1733